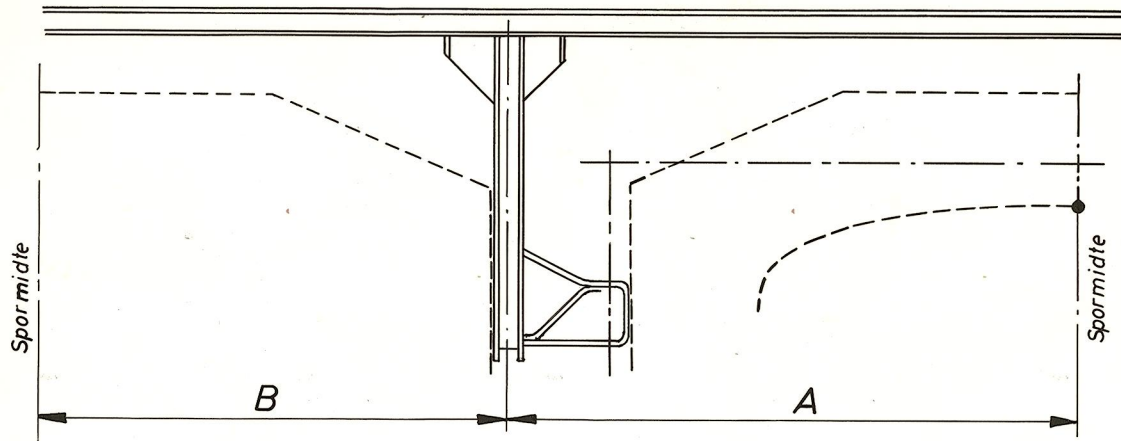


Tabell over minste avstand
midte bæreramme midte spor.



R (m)	$A_{min.}$		$B_{min.}$		$(A+B)_{min.}$	$(A+A)_{min.}$
	innerside kurve (m.)	ytterside kurve (m.)	innerside kurve (m.)	ytterside kurve (m.)		
300	1.660	1.630	1.368	1.338	2.998	3.290
350	1.641	1.615	1.349	1.323	2.964	3.256
400	1.626	1.604	1.334	1.312	2.938	3.230
500	1.606	1.588	1.314	1.296	2.902	3.194
700	1.583	1.570	1.291	1.278	2.861	3.153
1000	1.566	1.557	1.274	1.265	2.831	3.123
2000	1.545	1.541	1.253	1.249	2.794	3.086
∞	1.525	1.525	1.233	1.233	2.758	3.050

$$A_{min., \text{ innerside}} = 1.2 + 0.325 + \frac{40.5}{R} \text{ m.}$$

$$\text{„ ytterside} = 1.2 + 0.325 + \frac{31.5}{R} \text{ m.}$$

$$B_{min., \text{ innerside}} = 1.2 + 0.033 + \frac{40.5}{R} \text{ m.}$$

$$\text{„ ytterside} = 1.2 + 0.033 + \frac{31.5}{R} \text{ m}$$

Overhøyder er ikke tatt i betraktning.