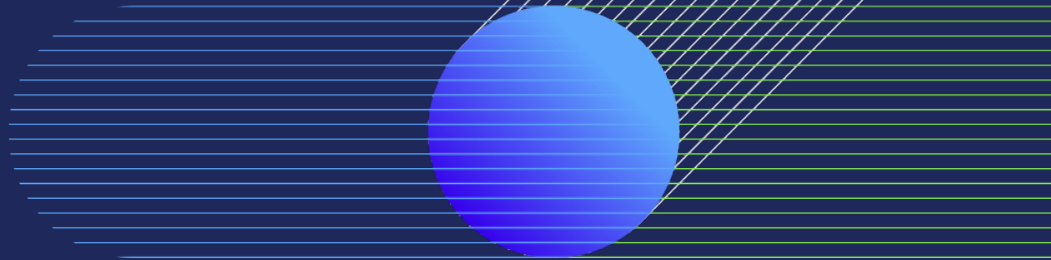
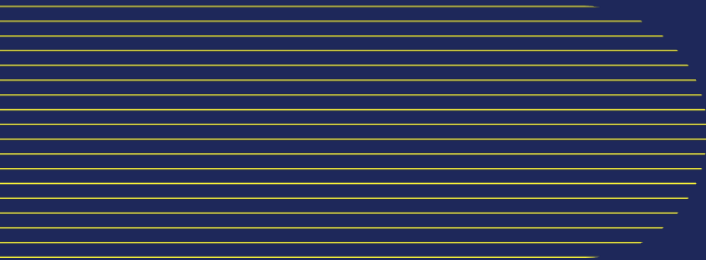


RTD (Real Time Display)

A short introduction to RTD



RTD (Real Time Display) is used to easily replicated the same view that one would get if standing on the station without the need to import traffic data (from e.g. SIRI) and make your own service

This service is open for everyone to use, where the only requirement is a browser and internet access.

Supported browsers are:

- Chrome v48 ->
- Firefox v50.0 ->
- Internet Explorer v11.0 ->

The URL needed for the request uses the following logical structure:

http://rtd.opm.jbv.no:8080/web_client/std?<REQUEST>

A request is made up of several elements, together these indicate which monitor you get

These elements are:

station=<*station*>

<station> is a station code (2 or 3 letters), see the station list for the available codes related to passengerstations.

content=<*content type*>

<content type>: *arrival* or *departure*

Decides if the monitor view is arriving- or departing-trains. Default: departure

layout=<*layout type*>

<layout type>: *landscape* or *portrait*

Decides the orientation of the monitor. Default: landscape

notice=<*yes* | *no*>

Default: yes

With *no* a station specific message will not be shown

Station is mandatory in the request, the other elements a optional.

If a tailored view is necessary, the optional elements is specified in the request by adding a **&**, followed by the element.

Examples:

Standard departure monitor at OSLO S:

http://rtd.opm.jbv.no:8080/web_client/std?station=OSL

Departure monitor at Oslo S in portrait:

http://rtd.opm.jbv.no:8080/web_client/std?station=OSL&layout=portrait

Arrival monitor at Lillestrøm in portrait without station messages:

http://rtd.opm.jbv.no:8080/web_client/std?station=LLS&layout=portrait&content=arrival¬ice=no